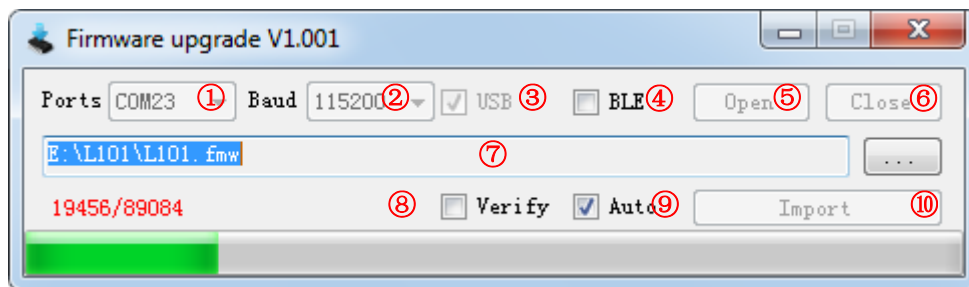


## L101 Firmware Upgrade User Guide

Before you start to upgrade the device firmware, please take few minutes to read this manual. Because an incorrect operation or power off during the upgrade process might cause the upgrade failure and device cannot work regularly.

Ulbotech Firmware Upgrade Software apply for Ulbo tech products into the bootloader software upgrade, the interface is as follows:



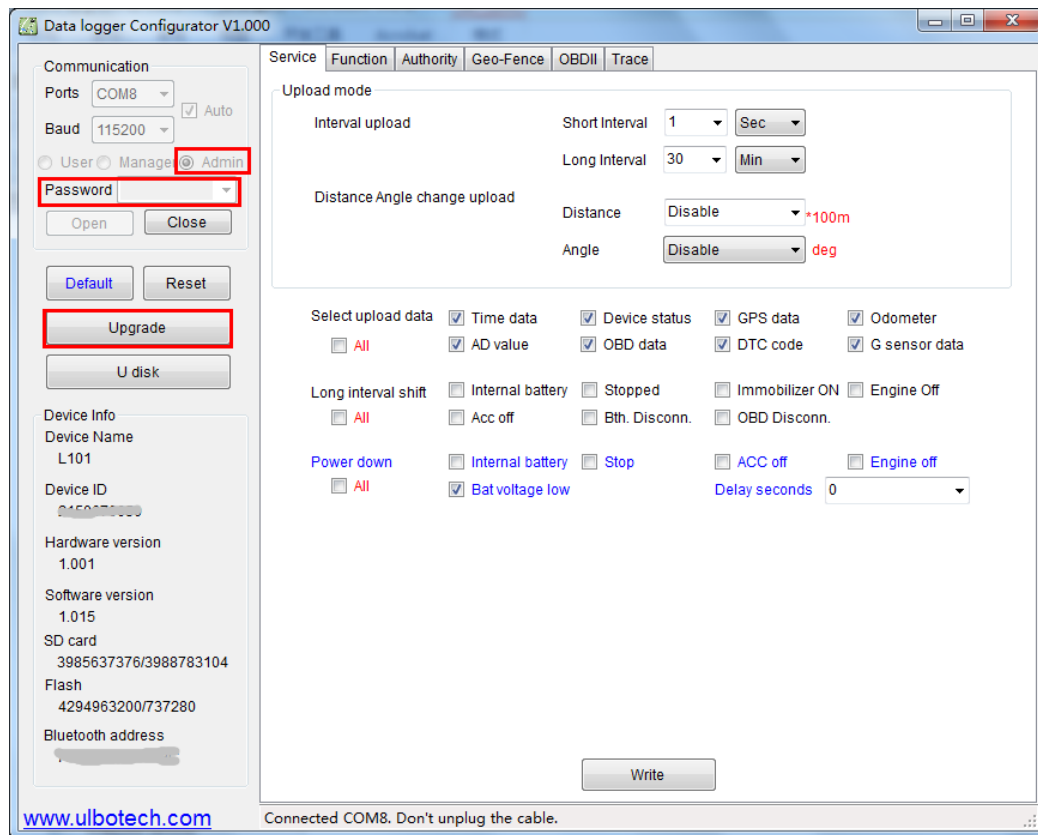
- 1: Display optional COM ports
- 2: Select port band
- 3: Select if only connect USB port
- 4: Select if use Bluetooth low energy to connect with device
- 5: "Open" button of COM
- 6: "Close" button of COM
- 7: Showed Firmware location and optional button
- 8: Select "verify" document matched with device
- 9: Select "Auto" upgrade
- 10: Execute upgrade button

### 1 How to set up the device into the Bootloader status

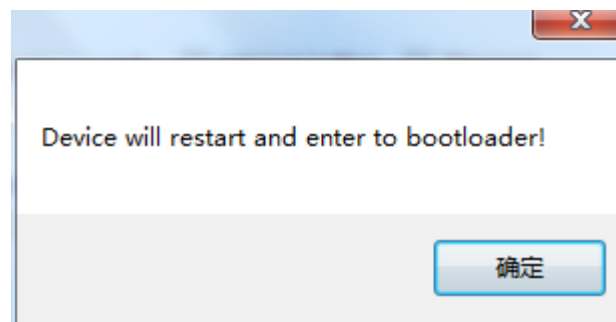
Turn on the device, login the device as "Administrator" authority and send command "FWU" to device to restart directly, the device is coming into the bootloader state and waiting for the upgrading operation. If 30 seconds without operation, the device will automatically enter.

Use the configuration software set the device in the Bootloader status:

Connecting device and PC with the Micro USB cable, open the configuration software and choose "Admin", enter the password of Administrator, and then click "Open", devices will be login as "Administrator" authority, after click "Upgrade":



Now device will restart and into Bootloader status:

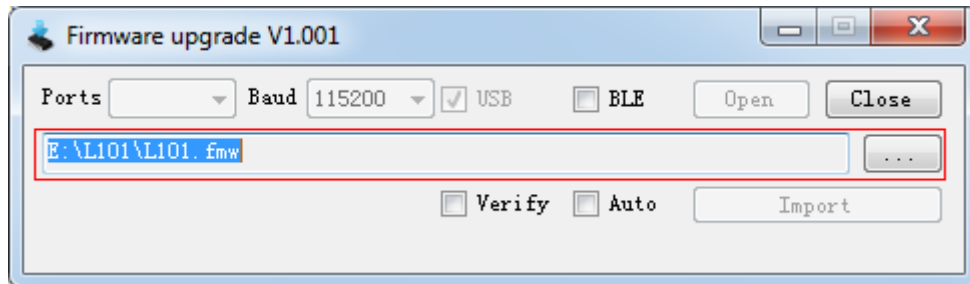


Press "OK" button to close alert window.

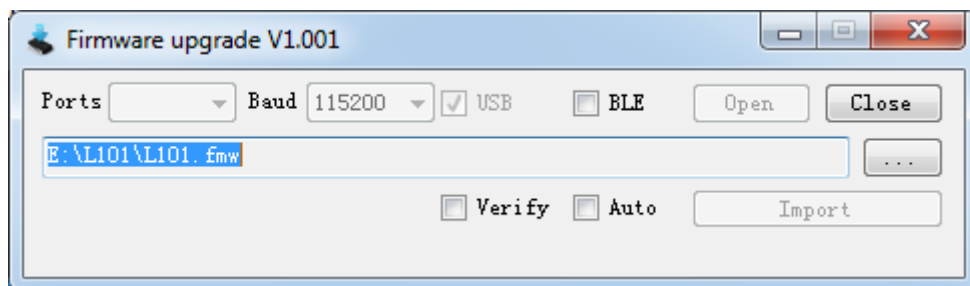
## 2 Manual operation upgrade

2.1 Device connect to the power supply, set device into “Bootloader” status.

2.2 Select corresponding upgrade software version with device, not select “Auto”:

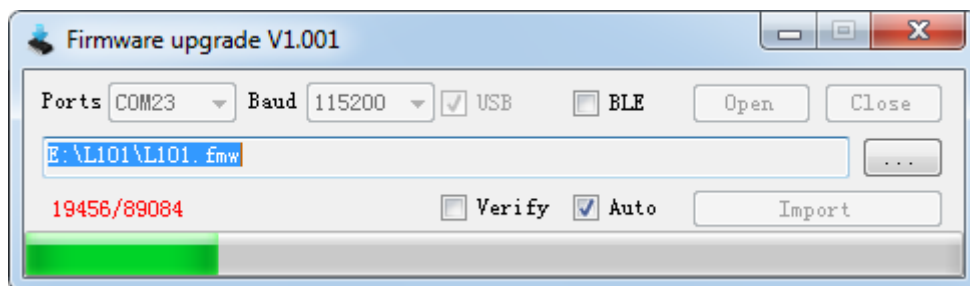


2.3 Connect device with PC again, note that device cannot power cut, or else device might not under “Bootloader” status, after select connect port and baud rate. If connect with device via USB, it’s not a must to select baud rate. If by Bluetooth low energy to connect with device, then select “BLE” and click “Open” button to open COM.

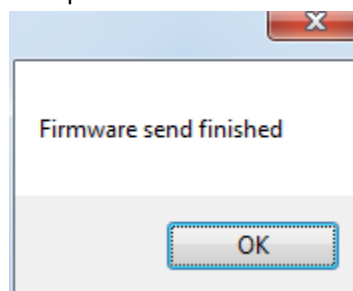


Note: If the physical connection between device and PC is serial port, then operate the step3 firstly, after step2.

1.4 When software detects device into “Bootloader” status, the “Import” button showed in valid status. Now click “Import” button to start working upgrade operation and showing upgrade process rate .



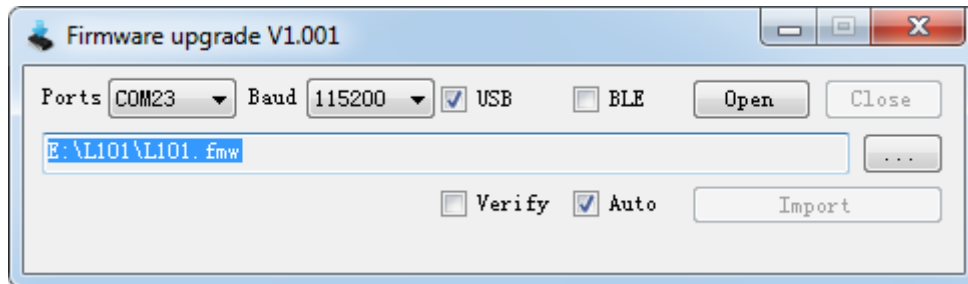
1.5 Upgrade successful as below picture showed:



### 3 Auto upgrade operation

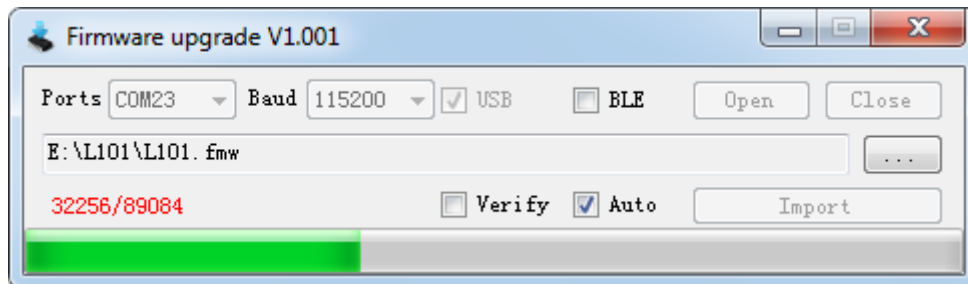
Auto upgrade operation must under USB connection status .

3.1 Select corresponding upgrade software version with device, also click “USB” and “Auto”.



3.2 Device connect to the power supply ,set device into “Bootloader” status .

3.3 Connect device with PC again ,note that device cannot power cut, or else device might not under “Bootloader” status .When software detects device connected , also will open COM automatically and check if device into “bootloader” status. If device under “bootloader” status, auto upgrade operation start working with upgrade process rate showing on the screen.



3.4 Upgrade finished, rate frame will become to gray again. But will not display” the upgrade finished” interface , user can go the next device upgrade operation.